

BQR MTBF Tool for Agile Users

Automating MTBF Prediction in PLM/PDM

BQR MTBF: Full Reporting

The BQR MTBF Tool automatically provides a full MTBF report at the level of the component, assembly and system.

The report is integrated into the Agile database. Moreover, the System MTBF result is integrated into the product tree.

At a Click

The Agile main screen features the BQR MTBF button that performs the calculation upon a single click.

The user defines the temperature at which the product is expected to work, as well as the relevant environmental conditions, and receives the complete report.

Benefits

- Automated MTBF prediction
- Avoids lengthy manual calculations
- Accurate and quick calculation

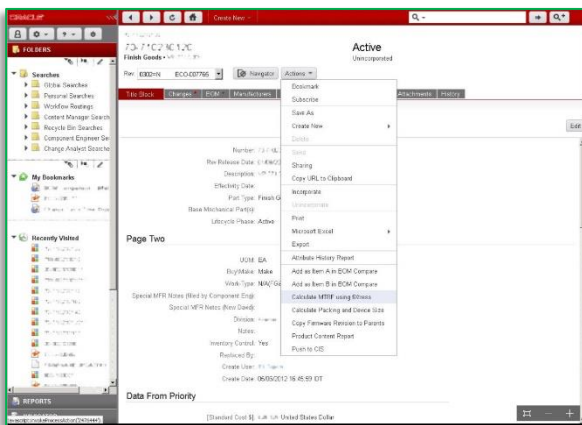
Why MTBF is Essential

- Marketing - MTBF specification is required for selling any electronic product
- Comparison - Analyzing the quality of different products
- Pareto - Defining the most unreliable component in a system for improvement
- Product warrantee - Required for warrantee information
- Spares Inventory - Calculating the spare parts inventory
- Preventive maintenance – Defining the schedule for components replacement before they fail

What is MTBF?

MTBF (Mean Time Between Failures) measures the reliability of a hardware component or product, by predicting the time between inherent system failures during its operations. MTBF usually ranges between thousands or hundreds of thousands of hours.

AGILE



BQR MTBF fixtress

RefDes	Description	Part Number	dT[C]	T[C]	Pred Method	FR(1)	MTBF(Hrs)	pQ
System	Pressure Meter	PRSMT	25.0	T332.3	0.155496		6,431,028	
A3	DIODE_ZENER	DIATL	0.0	25.0	<AsParent>	0.002008	816	79,33,907
X11	NEON	456	0.0	25.0	<AsParent>	0.100000	64%	1.0
PRS11	PIEZOELEC_CERAM	PXE	0.0	25.0	<AsParent>	0.015150	9%	1.0
J11	LRE_SOCKET	S21-A1A1	0.0	25.0	<AsParent>	0.006060	3%	1.0
U1	MC50-OP	4192-08	0.0	25.0	<AsParent>	0.004044	2%	1.0
Q11	NMOS_100V_8A	216796	0.0	25.0	<AsParent>	0.001297		1.0
R11	RES_5.62_5W	RER60F5R62R	0.0	25.0	<AsParent>	0.000129		1.0
A3stress	INDICATION-PCB	IND	0.0	25.0	<AsParent>	0.015903	10%	62,880,664
L31	TRAFO	T1789	0.0	25.0	<AsParent>	0.008315	5%	1.0
R33	RES_1K_1%_1W	RWR8151001FS	0.0	25.0	<AsParent>	0.001742	1%	1.0
C31	PHILIPS_CAP_0.1UF	T352E106M016AS	0.0	25.0	<AsParent>	0.001577	1%	1.0
U31	A/DCONVERTER	AD573	0.0	25.0	<AsParent>	0.001071		1.0
U33	TRISTATE OCTAL-D-LA	54HC373J	0.0	25.0	<AsParent>	0.000997		1.0
U32	SO_14	74HC02	0.0	25.0	<AsParent>	0.000811		1.0
RL31	LRE_RELAY_50A	M520-US-NL	0.0	25.0	<AsParent>	0.000750		1.0
D31Z	TH-002044H_30	1144578	0.0	25.0	<AsParent>	0.000301		1.0
Q31	TRANS_NPN	JAN2N2222A	0.0	25.0	<AsParent>	0.000107		1.0
LD31	LED_GREEN	NSL5250	0.0	25.0	<AsParent>	0.000068		1.0
D31	SCHOTTKY_RECT	20F00668	0.0	25.0	<AsParent>	0.000045		1.0
R32		M55342K038500GR	0.0	25.0	<AsParent>	0.000039		1.0
R34	Chip-4 Power 0.155W	M55342K03847GR	0.0	25.0	<AsParent>	0.000037		1.0
R31	CHIP_2.74K_1/8W	D55342E0782E74R	0.0	25.0	<AsParent>	0.000032		1.0
C32	CAP_F_CHIP_47PF_100V	JATC111TF470K100AP	0.0	25.0	<AsParent>	0.000012		1.0
A2	MICRO-PCB	MICRO	0.0	25.0	<AsParent>	0.012913	8%	77,441,271
U21	8BITMP	MC6809E	0.0	25.0	<AsParent>	0.005404	3%	1.0
R21	RES_1K_1%_1W	RWR8151001FS	0.0	25.0	<AsParent>	0.003187	2%	1.0
Q21	SCHOTTKY_RECT	20F0045D04145	0.0	25.0	<AsParent>	0.001896	1%	1.0
U22	V_REG	LM117	0.0	25.0	<AsParent>	0.001052		1.0
U23	PRECIS_VREG	MC1466L	0.0	25.0	<AsParent>	0.001052		1.0
C21	CAP0_1U_50V	M39014/01-1553	0.0	25.0	<AsParent>	0.000332		1.0

About BQR

BQR is a world leader in reliability analysis and maintenance optimization solutions for the EDA market. BQR software tools help engineers create more robust and reliable products, as well as improving the design process.

Throughout its 25 years of experience, the company has been serving leading companies in Israel and worldwide, including Elbit, IAI, Rafael, DSO, Israel Electric Corporation, Cisco, Baker-Hughes, IBM, Philips, Bombardier, Schiphol airport and others.

20-8023309011 > 70-710230120
70-710230120
 Finish Goods • VP-771/220V
 Rev: 0302=N ECO-007765 Navigator Actions

Title Block Changes BOM Manufacturers Quality Relationships Where Used Att

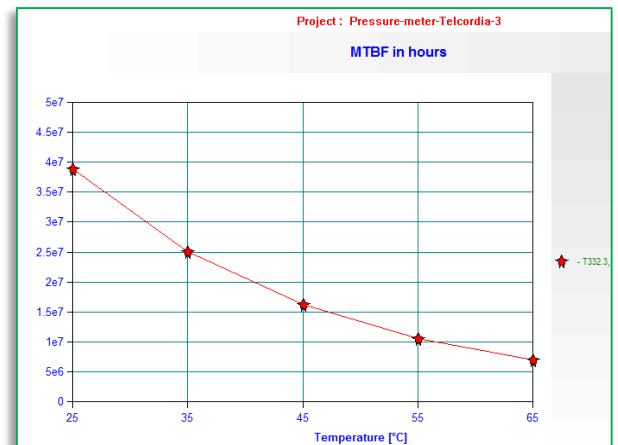
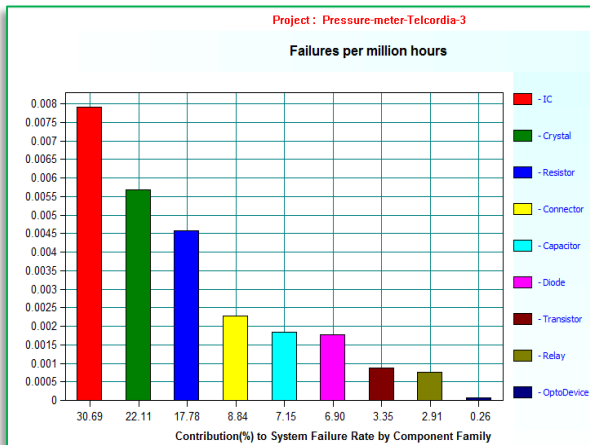
Your changes have been successfully saved.

Notes:
 Inventory Control: Yes
 Replaced By:
 Create User: Eli Topchi
 Create Date: 05/06/2012 16:45:59 IDT

Data From Priority

[Standard Cost \$]: 628.829 United States Dollar
 [Lead Time]: 0
 [On Hand Inventory]: 3
 [Open PO's]: 0
 [Average Monthly Usage]: 0
 [Base Product No]: VP-771
 [ECO1/2/3]: ECO-006128;
 [VM/Fin Goods Replacement]:
 [Preferred Vendor Number]: 0
 [Turnkey (for Agile)]: No
 [Not for Phase Out]: No
 Special Parameter:
 MTFB (Hours): 1456300

Page Three



70-710230110
70-710230110
 Finish Goods • VP-771/110V
 Rev: 0302=N ECO-007765 Navigator Actions

Title Block Changes BOM Manufacturers Quality Relationships Where Used Attachments History

Attachments Views: Base View

Add Remove Get View CheckOut Cancel CheckOut CheckIn More

Filename	File Description	File Size	File Type	Folder Number
report.csv	Stress MTBF Report	16,774	csv	FOLDER0380794
ITEM.mtbf	MTBF File	6,107,136	mtbf	FOLDER0380793
ITEM_MC.html		538,951	html	FOLDER0380795